

Back to School 2020 Procedures

All Schools

Getting ready for school – Parents/caregivers can use the provided checklist to assess their child daily for symptoms of common cold, influenza, COVID-19, or other infectious respiratory disease before sending them to school. If a student shows any symptoms (that are not related to an existing condition such as seasonal allergies) they must not take the bus or go to school.

Riding the bus – Students must practice physical distancing while waiting for the bus. Students should have their own seat and follow the assigned seating plan for their bus. Middle and secondary school learners must always wear a mask on the bus.

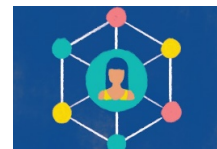
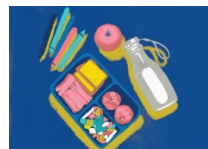
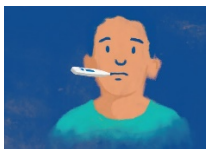
Entering the school – Use the appropriate drop off points and appropriate entrance specific to your school. When students arrive at school, they must wash their hands or use a hand sanitizer station. Schools are closed to adults unless they have an appointment or invitation from administrators.

Learning groups – Students must stay with their learning group throughout the day to limit interaction with other students, especially in common areas and during breaks.

Hygiene throughout the day – Students should perform hand hygiene before and after breaks, eating and drinking, using shared spaces (eg. gym, library, playground), using the washroom, after sneezing or coughing, and whenever hands are visibly dirty.

Feeling sick – If a student feels sick or shows any symptoms during the school day, they must report to the office and staff will follow protocols for isolating the student and returning them home.

Physical distance – Students must keep 2m away from those outside their learning group. Do not share personal items such as food, school supplies, or clothing.



At Belgo,

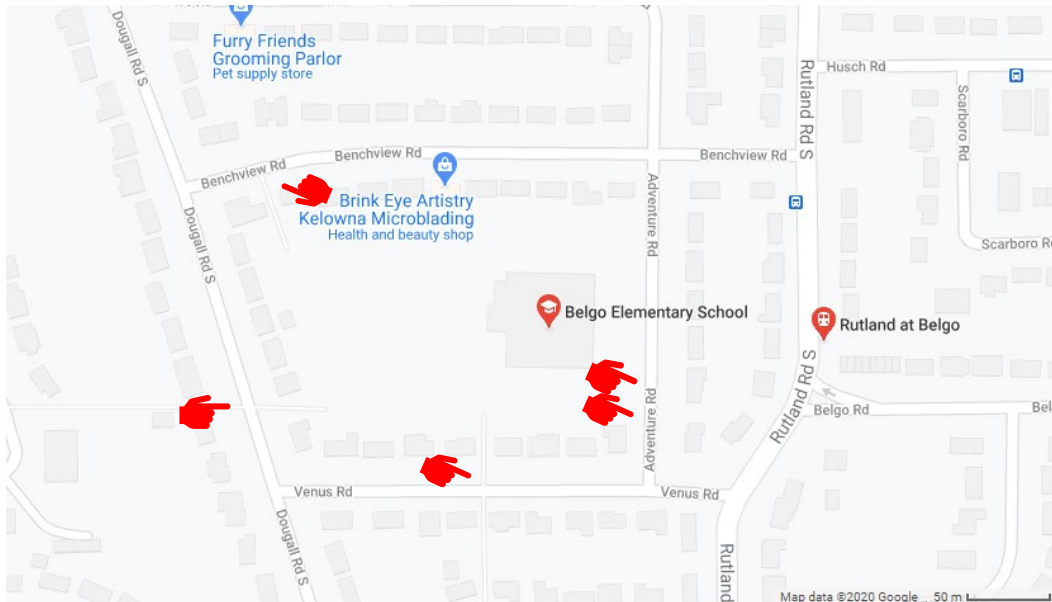
Entrance –

- At the bell, students will line up outside near their classroom. Pylons with each classroom teacher's name will be placed in the grass area.
- Students will be guided by their teacher to one of the four large entrances and proceed directly to the hand washing stations in each Pod.
- Expected visitors to our building are asked to enter through the main door by the office and proceed directly to the hand washing station or use the hand sanitizer located by the main entrance. Unexpected visitors are asked to contact us by phone for directions before entering.



Drop-off points –

- Parents are asked to drop off students outside the school property. There are access points/gates in the front of the school (Adventure Rd., as well as on the three streets surrounding the perimeter of the school (Venus Rd., Benchview Rd, and Douglas St.).
- Exceptions may be made for Kindergarten students and parents for the month of September if need be. Kindergarten parents will receive future information from their teacher.



Hand hygiene

- Students will be required to wash their hands whenever entering or exiting the building to go home or access equipment, before and after eating and drinking, before and after using shared spaces or equipment, after using the washroom, after sneezing or coughing, and whenever hands are visibly dirty.

Food services

- Breakfast Program will resume later in September. Only prepackaged food will be accessible to students. Further details will become available when the program is set to begin.
- Brown Bag Lunch will continue on a daily basis. Lunches will be delivered to classrooms starting September 21.
- There will be no hot lunch program available this year.

Leaving school –

- Students will be dismissed at 2:30 and will be given hand sanitizer to use while exiting the classroom. We ask parents to wait for their child/children outside the perimeter of the school, and strongly suggest establishing a daily meeting spot so that students know where to go meet their parents.